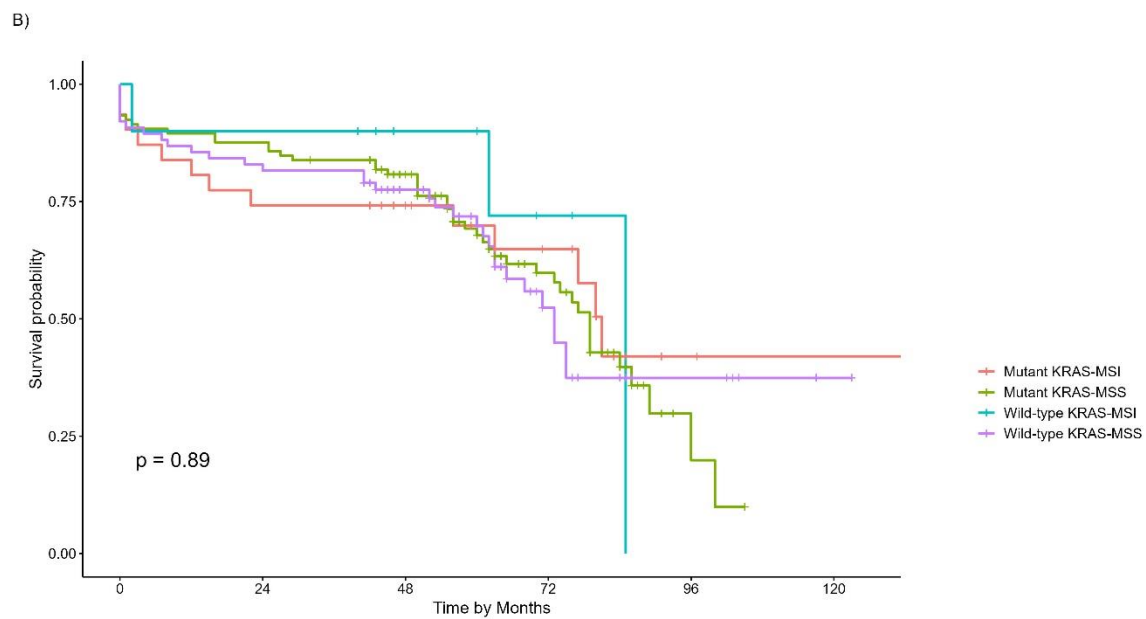


	0	24	48	72	96	120
Mutant PIK3CA-MSI	25	19	16	7	2	1
Mutant PIK3CA-MSS	76	64	49	15	1	0
Wild-type PIK3CA-MSI	16	13	10	6	0	0
Wild-type PIK3CA-MSS	103	89	66	26	6	0

Number at risk

Time by Months



	0	24	48	72	96	120
Mutant KRAS-MSI	31	23	20	10	2	1
Mutant KRAS-MSS	105	92	72	29	3	0
Wild-type KRAS-MSI	10	9	6	3	0	0
Wild-type KRAS-MSS	76	63	45	14	5	1

Number at risk

Time by Months

Suppl 1. Kaplan-Meier overall survival curves of CRC patients stratified by microsatellite instability (MSI) status. A) Overall survival curves stratified by PIK3CA mutation and MSI status; B) overall survival curves stratified by KRAS mutation and MSI status.